



Specification

1.Product Pictures.....	P2
2.Overall dimensions.....	P3
3.Product features.....	P4
4.Technical parameters.....	P5
5.Installation drawing.....	P6
6.Application area.....	P6
7.Attention	P7
8.Warning.....	P7

1. Product Pictures



2.5inch Downlight 10W



3inch Downlight 12W

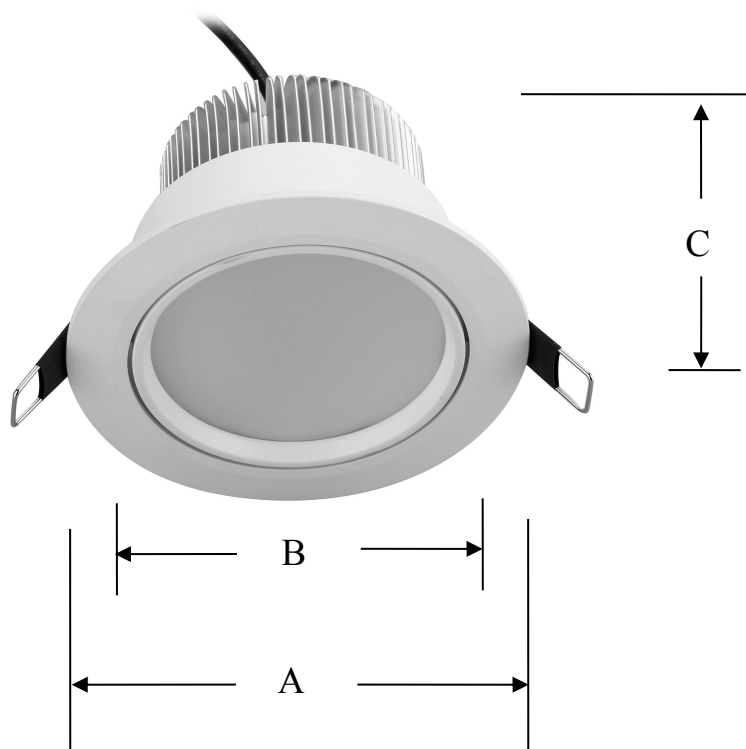


3inch Downlight 12W



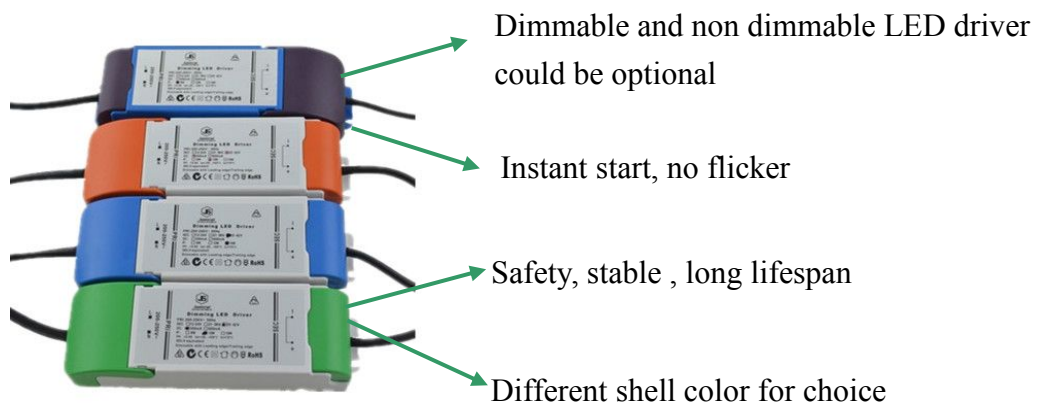
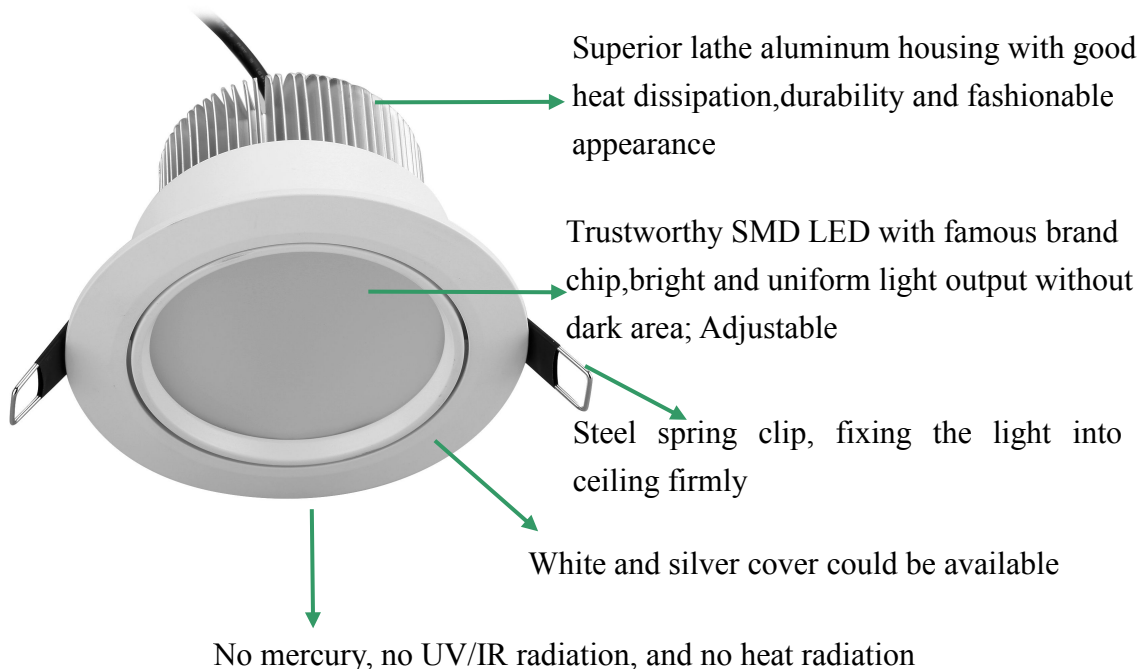
3.5inch Downlight 15W

2. Overall Dimensions



Items	A Diameter(mm)	B Cutout(mm)	C Height(mm)
2.5inch(10W)	90	75	75
3inch (12W)	110	90	57
3inch COB (12W)	108	90	105
3.5inch(15W)	120	100	75

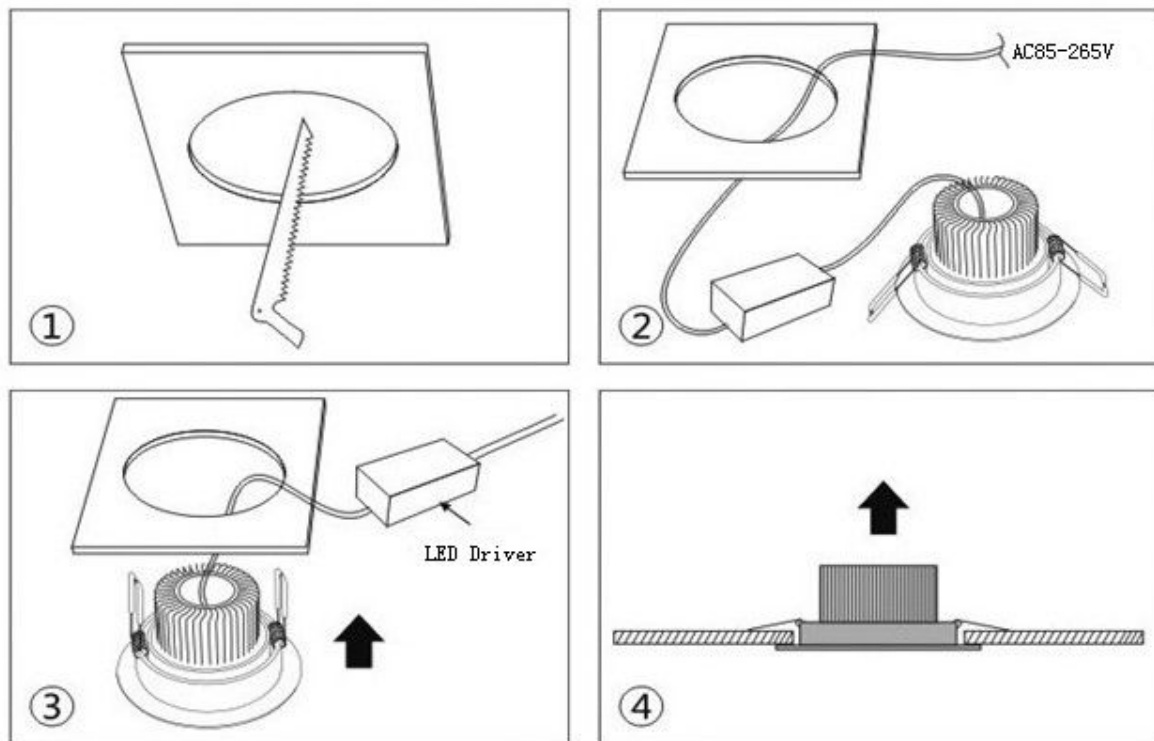
3. Product Features



4. Technical Parameters

Items	2.5inch (10W)	3inch (12W)	3inch COB (12W)	3.5inch (15W)
Model No.	JX-THJ272P10	JX-THJ245P12	JX-THJ246P12	JX-THJ287P15-GB
Input Voltage	85-265VAC	85-265VAC	85-265VAC	85-265VAC
Power	10W \pm 10%	12W \pm 10%	12W \pm 10%	15W \pm 10%
Dimmable	Optional	Optional	Optional	Optional
Luminous Flux	850Lm \pm 10%	1050Lm \pm 10%	1050Lm \pm 10%	1250Lm \pm 10%
Luminous Efficiency	\geq 80Lm/W	\geq 80Lm/W	\geq 80Lm/W	\geq 80Lm/W
Color Temperature	2500-7000K	2500-7000K	2500-7000K	2500-7000K
Rendering Index	\geq 80	\geq 80	\geq 80	\geq 80
LED Type	2835 SMD	2835 SMD	2835 SMD	2835 SMD
Cover Color	White/Silver/Black	White/Silver/Black	White/Silver/Black	White/Silver/Black
Beam Angle	120 degrees	120 degrees	120 degrees	120 degrees
IP Standard	IP44	IP44	IP44	IP44
Warranty	3 years	3 years	3 years	3 years

5. Installation drawing



6. Application area:



Hotel, Exhibition, Hospital, Stores, Library, School, Convenience stores, Bank, Airport, Office lighting, Museum, Home

7. Attention

1. Please handle with care when transportation.
2. Don't use in the place with corrosive,flammable and explosive materials.
4. Don't use in the place near heat source.
5. Please insure all the joint could be connected correctly and reliably.
6. Don't open product cover without permission.
7. Please disconnect the power before installation or maintenance.
8. Environment temperature: $-20\sim 60^{\circ}\text{C}$.
9. Storage temperature: $-40\sim 85^{\circ}\text{C}$.

8.Warming

1. The lamp should be installed and disassembled by qualified electrician.
2. Please read and observe operating instruction before installation.
3. Please insure that the lamp has been cooling and the power has been disconnected before installation,maintenance and replacement.
4. Please switch on the power after confirmation of correct installation.
5. Please insure ventilation around the lamp and don't use the lamp against of fire regulation.
6. Please don't disassemble and assemble the lamp personally.
7. Please consult qualified engineer if you have any doubt.